

SERIES #1000 & #3010



The Series #1001 & #3010 APT Tanks are ASME Coded tanks that are designed to prevent ground pollution from production equipment, giving the operator a place to go with waste fluids.

Applications:

- Compressor Skids
- Dehydrators
- Centrifugal/Plunger Pumps
- Flare Lines
- Drains from production equipment
- Leaks from Stuffing Boxes

Design

The #1001 and #3010 are gravity fed tanks that will capture fluids through the top inlet check valve. At approximately 90% capacity the pneumatic controller will activate the stainless steel 3-way valve that will pressurize the tank. Fluids will dump through the lower discharge check valve to operator's stock tank. Once the tank is empty, the remaining pressure will vent off and the tank will resume another cycle.

Available Tanks Options:

Series #1001 Hard mounted in fiberglass box (pictured on back)

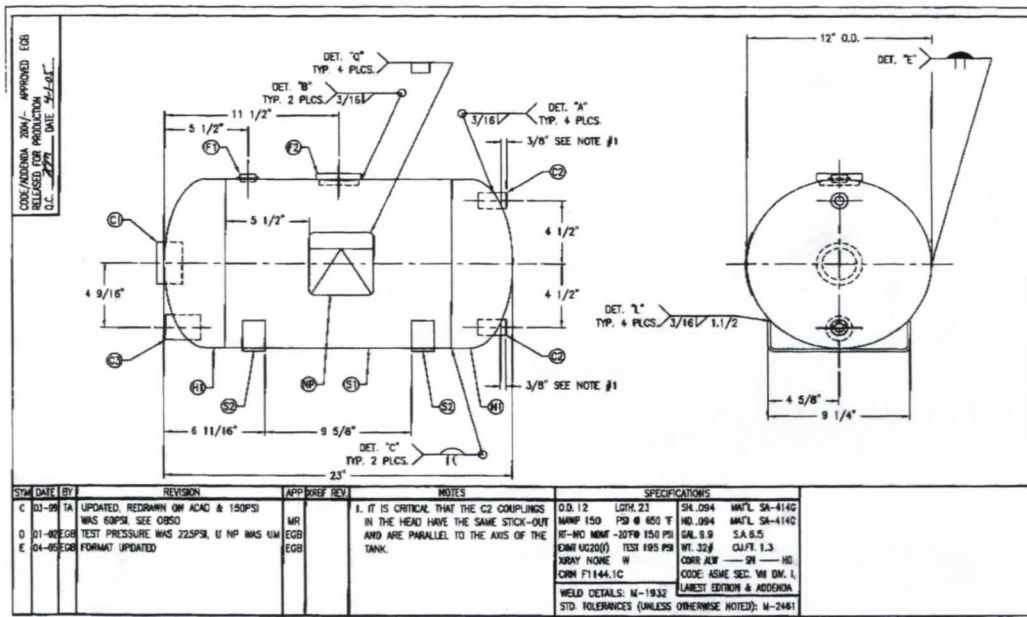
Steel and Stainless Steel Fittings

Relief valves set 150 PSI

Inlet & discharge checks on bottom of tank.

- **APT will custom build to meet customers preferences.**

SERIES #1000 & #3010



SERIES	#1001	#3010
CAPACITY	10 GALLONS	30 GALLONS
CODED/RELIEF VALVE	150 PSI / 100 PSI	150 PSI / 100 PSI
INLET CHECK VALVE	1" (STANDARD) 2" (AVAILABLE)	2" (STANDARD) 1" (AVAILABLE)
DISCHARGE CHECK VALVE	1"	1" (STANDARD) 2" (AVAILABLE)
SUPPLY GAS INLET	1/4"	1/2"
LENGTH X WIDTH X HEIGHT (in)	34" X 12" X 17"	48" X 16" X 22"
FLOW RATE	330 GPH	1465 GPH
TEMPERATURE RATING	650 F	400 F
STAINLESS STEEL FLOAT	2 X 6	2 X 12



**10 GALLON TANK
FIBERGLASS ENCLOSURE
WITH LID**