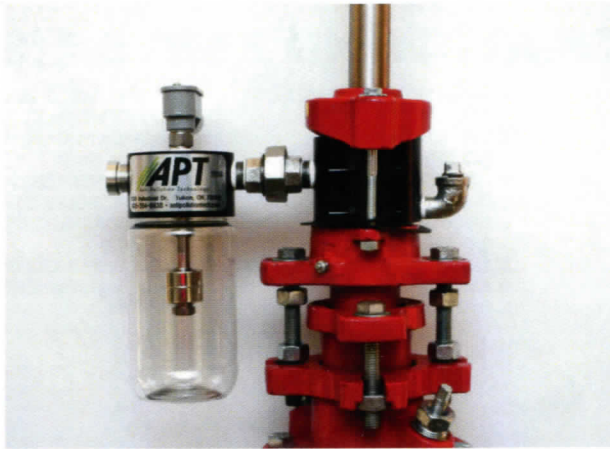


# SERIES #5000



The Series #5000 are Leak Detecting units designed to capture fluids leaking past the packing members of the stuffing box. The leak detector has a float switch that will shut down pumping unit when reservoir is full.

**Stuffing Box  
Containment**



**Visual  
Inspection**



**Safety  
Shut-off Switch**



## Features

- Split Housing Adapter for Easy Installation. No Rig Required.
- Adapter Provides an Increase in the Amount of Lubricating Oil for Seals.
- Fits Polish Rod/Liner Sizes 1"-1 3/4"
- Low Profile requiring 4 1/2" clearance
- Corrosion Resistance Parts
  - 316 Stainless Steel Electrical Switch
  - Anodized 6061 Aluminum Housings

## Reservoir Options



Glass



Plastic



Steel

## Tech Specs

Switch: Opened or Closed Circuit  
**Gas or Electric Applications**  
Built-in Resister for High Ignition Systems

Switch Rating: 3 amp @ 28 VDC and 100 watts @ 110 VAC

# SERIES #5000

## STUFFING BOX LEAK DETECTOR SCHEMATIC AND PARTS LIST

### Wiring Schematic

SPDT

Red (NC)

Black (C)

White (NO)

Blue (Resistored NO)

### Switch Features

- Hermetically sealed contacts
- Switch materials are lead free and RoHS compliant
- Solid Tungsten bar and plate
- UL recognized component

### Ambient Conditions

Ambient temperature (storage) -40 to +125 Celsius

Ambient temperature (operation) -40 to +200 Celsius

### Electrical Data

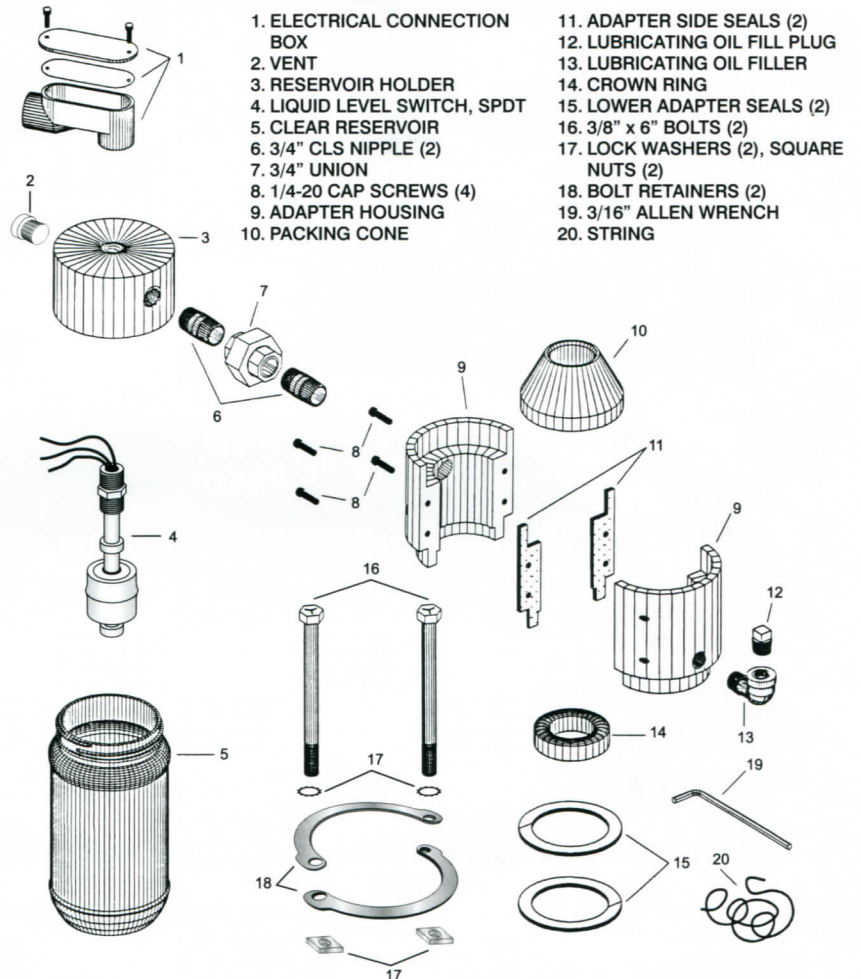
Watts Max. 100

Voltage Switching VDC max. 120

Voltage Breakdown VDC min. 150

Current Switching Amp max. 3

Current Carry Amp max. 3.6



1. ELECTRICAL CONNECTION BOX
2. VENT
3. RESERVOIR HOLDER
4. LIQUID LEVEL SWITCH, SPDT
5. CLEAR RESERVOIR
6. 3/4" CLS NIPPLE (2)
7. 3/4" UNION
8. 1/4-20 CAP SCREWS (4)
9. ADAPTER HOUSING
10. PACKING CONE
11. ADAPTER SIDE SEALS (2)
12. LUBRICATING OIL FILL PLUG
13. LUBRICATING OIL FILLER
14. CROWN RING
15. LOWER ADAPTER SEALS (2)
16. 3/8" x 6" BOLTS (2)
17. LOCK WASHERS (2), SQUARE NUTS (2)
18. BOLT RETAINERS (2)
19. 3/16" ALLEN WRENCH
20. STRING